



Every day made better[®]





YOUR DAILY ROUTINE

With Hot Spring® Spas, every day is a chance to start fresh, with heat that awakens, crystal clear water that invites and innovation that you can feel – inspiring you to do more, experience more, and live more.



At the end of the day, we'll help you get ready for what's next.

Unleash your best self™

VITALITY EVERY DAY

A Hot Spring® spa is a place for personal improvement, where you can immerse yourself in warm water and massage to revitalise, slow down to recover and connect with others to feel closer. Remarkable things happen when you make spending time in your spa part of your daily routine.





BETTER WELLNESS

Hydrotherapy improves circulation and helps keep you flexible, so you can be your best, every day. Step into your Hot Spring® spa and emerge feeling better mentally, physically and emotionally.

BETTER RECOVERY

The combination of heat and advanced massage provides a total-body therapeutic experience. Warm water raises body temperature and increases blood circulation, buoyancy relieves stress on joints to encourage better movement and carefully placed jets massage away the knots and aches in your muscles.



BETTER SELF

A spa provides you with a unique sense of personal well-being, a special place where the rigours of everyday life are on pause. It prepares you for the day ahead, and helps you unwind and sleep better at night. Here, you discover your best self.

BETTER CONNECTION

Spending time in a spa pool, without distractions, invites you to connect on a deeper level with the people who matter most in your life. You'll find that you feel closer and great conversations happen naturally. The benefits flow well beyond just your time in the water, they fill your life with moments that fuel your best relationships.

HOT SPRING LEADS THE WAY

As the world's best-selling spa brand, Hot Spring earned its reputation for quality and innovation. But we don't stop there. Our focus is on providing *The Absolute Best Spa Pool Ownership Experience™* through unparalleled massage, worry-free water care, energy-saving features and unmatched customer care. With a Hot Spring spa, you can relax today, tomorrow and long after your purchase.



LEGENDARY MASSAGE

As the industry leader with more than 40 years of hydrotherapy expertise, we perfected the warm water massage. Comfortable seats and specialised jet systems work together to create a distinctive experience that is precise and personalised. We invite you to experience it yourself.



BACK MASSAGE LIKE NO OTHER

There's nothing else like our patented Moto-Massage® DX moving jet. It delivers two powerful streams of water that sweep up and down the length of your back. It's a massage like no other.

Four Precision® jets positioned above every Moto-Massage DX jet massage your neck and shoulders. These jets work in harmony for an unparalleled hydrotherapy experience.

Available on Highlife® Collection.

PLACEMENT WITH PURPOSE

Each spa uses a variety of jets, each with its own purpose. They are thoughtfully arranged in each seat and work together to target specific muscle groups from your neck to your shoulders, back, calves, wrists and feet.

COMFORT THAT FITS YOU

Ergonomically designed shells are shaped to fit the body's natural contours, perfectly positioning you to relieve pressure and stress. With multi-level seating, there's a comfortable spot to satisfy every body's needs.

PERSONALISED CONTROL

Our Comfort Control® system lets you dial in your ideal mix of air and water for a powerful massage or just a soft touch. Use the SmartJet® system to customise water flow to different jet groups and seats throughout the spa.



CRYSTAL CLEAR WATER

A great spa pool experience starts with water that looks, feels and smells great. Our innovative technologies deliver clean water with minimal effort.



THE SIMPLER, CLEANER, FRESHER WAY TO SPA POOL

The FreshWater® Salt System is a revolution in worry-free water care. This breakthrough technology is the simplest way to keep your spa pool water clean and fresh for up to a full year.*

Available on Highlife® and Limelight® Collections.

freshwater®
Salt System

FEELS BETTER

Water is sanitised with a titanium cartridge that automatically generates chlorine from salt. You'll enjoy soft, natural-feeling water without harsh odours, itchy skin or irritated eyes.



SIMPLE CARE

The titanium cartridge lasts four months and requires no maintenance. When it's time to replace it, you can do it in seconds without tools and without draining the water.



MINERAL SPA SANITISER

For the ultimate water care solution, add this silver ion cartridge to inhibit bacteria growth and further reduce the need for chemical sanitiser.



WORRY FREE

Spend less time maintaining your spa and more time enjoying it. The control panel displays helpful messages that eliminate guesswork by showing you how everything is working and what adjustments might be needed.

CONSERVES WATER

When properly maintained, water life is extended, reducing the need to drain and refill your spa for up to 12 months – up to three times longer than other systems.*

*Many factors affect the life of spa water, such as bather load and water chemistry. When spa water is properly maintained considering these factors, a 3-pack of FreshWater Salt System cartridges will keep water clean and clear for up to a full year.

CRYSTAL CLEAR WATER

FROG® IN-LINE SANITISING SYSTEM

The FROG system* is bromine-based and is formulated to work effectively in warm water. The system is integrated into the shell of the spa where it works continuously.

Rather than measuring out chemicals, you simply replace the cartridge that lasts for weeks or months. The cartridge has a dial that you adjust depending on how often you use your spa. Bromine is easier on the skin and the FROG system requires fewer chemicals, making it easy to use your spa as often as you want.

Combine the FROG cartridges with the optional FreshWater® III ozone system for the most effective water care on Hot Spot spas.



START WITH CLEAN WATER

These chemical-free accessories get you off to the right start when filling your spa. The Clean Screen® pre-filter attaches to your garden hose to filter out organic contaminants, tannins and metals. Use Vanishing Act® or On The Go® calcium removers to reduce hardness for softer-feeling water.

100% NO-BYPASS FILTRATION AND TRI-X®

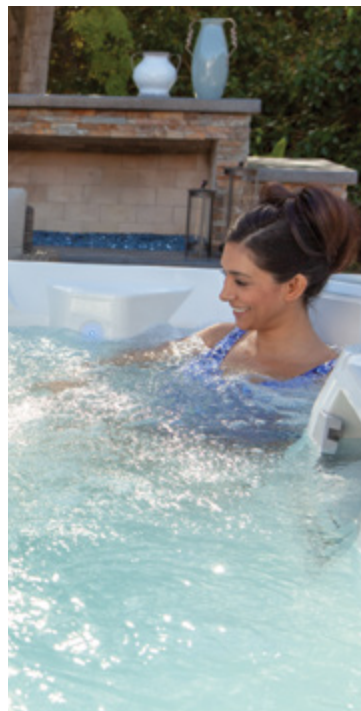
All the water in a Highlife® Collection spa is filtered all the time. In other spas, water bypasses the filters when the jets are on – which is when you need it most. With our exclusive system, all the water passes through the filters, even when the jets are running.

High-flow Tri-X filters are the key. Exclusive three-dimensional technology provides a more effective filtration area compared to paper filters of the same size, to filter significantly more water. This also means they don't need to be cleaned as often, and when they do, they are dishwasher-safe for convenience.

Available on Highlife Collection.

DUAL-ACTION FILTRATION

This unique two-filter design provides for more effective, constant filtration. One filter is dedicated to the circulation pump. The other is dedicated to the jet pumps to clean water when the jets are running. Working together, these two filters provide a more total effective filtration area to keep water cleaner with less maintenance. *Available on Limelight® Collection.*





ENERGY EFFICIENT



Your spa will be hot and ready when you want it. Our comprehensive Energy Smart® system uses a combination of innovations to maintain spa water at your desired temperature while keeping energy costs low.

HIGH-DENSITY FOAM INSULATION

The same material found in commercial freezers is applied in an exclusive technique using multiple layers of varying densities. This helps eliminate gaps and voids in the foam, locking in heat and maximising energy efficiency.

Available on Highlife® Collection.

FIBERCOR® INSULATION

This exclusive insulation fills the cabinet completely with a density four times greater than the half-pound foam used in most spas.

Available on Limelight® and Hot Spot® Collections.

RECYCLED HEAT

Our patented pump shroud captures heat generated in the spa's equipment compartment and transfers it to the water to reduce energy consumption.

Available on Highlife Collection.

TITANIUM NO-FAULT® HEATER

A titanium housing and heater element maximises heat transfer to the water and delivers unmatched corrosion resistance. In fact, this patented No-Fault heater is warranted regardless of water chemistry.

Available on Highlife and Limelight Collections.



HOT SPRING® SPA COVERS

We manufacture our own spa covers to ensure a tight seal that locks in heat. These dense foam covers feature child safety locks and are UL-listed to ASTM standards for safety. Our covers also feature an energy-saving hinge seal, which prevents heat from escaping at the center of the spa cover.

SILENTFLO 5000® CIRCULATION PUMP

A dedicated pump continuously circulates spa water, 24 hours a day, while using less energy than a 40-watt light bulb. This eliminates the need to rely on high-powered jet pumps to circulate water, reducing energy costs and wear.

Available on Highlife® and Limelight® Collections. Optional on select Hot Spot® Collection models.

INSULATED BASE PAN

Structural ribbing on the bottom of the spa increases energy efficiency by creating insulating air space and minimising contact with cold ground.

Available on Highlife Collection.

ENERGY COST

All models meet or exceed stringent California Energy Commission (CEC) and APSP 14 energy efficiency standards for portable spas.

Actual energy costs depend on spa model, usage, temperature and other factors. The table below shows energy cost of a mid-sized Highlife® Sovereign® Spa with average use.

NZ WEEKLY COST ESTIMATES = RATE × KILOWATT HOUR

CITY	TEMP	kWh	RATE	COST
Whangarei	15.5°C	34.8	23.2c	\$8.07
Auckland	15.1°C	35.3	16.6c	\$5.86
Hamilton	13.7°C	37.0	16.9c	\$6.25
Tauranga	14.5°C	36.1	19.3c	\$6.97
New Plymouth	13.7°C	37.0	20.6c	\$7.62
Napier	14.5°C	36.1	18.7c	\$6.75
Palmerston North	13.3°C	37.5	20.5c	\$7.56
Wellington/ Lower Hutt	12.8°C	38.1	15.6c	\$5.94
Nelson	12.6°C	38.4	17.9c	\$6.87
Christchurch	12.1°C	39.0	20.1c	\$7.83
Dunedin	11.0°C	40.3	17.9c	\$7.21
Timaru	11.2°C	40.1	20.4c	\$8.18
Invercargill	9.9°C	41.7	17.3c	\$7.21

AU WEEKLY COST ESTIMATES = RATE × KILOWATT HOUR

CITY	TEMP	kWh	RATE	COST
Adelaide	16.3°C	33.8	34.4c	\$11.63
Brisbane	20.6°C	28.6	17.3c	\$4.95
Cairns	24.8°C	23.4	21.2c	\$4.96
Coffs Harbour	18.3°C	31.4	27.9c	\$8.76
Melbourne	14.5°C	36.1	22.2c	\$8.01
Perth	18.2°C	31.5	28.0c	\$8.82
Port McQuarie	17.7°C	32.1	27.9c	\$8.96
Sydney	17.7°C	32.1	21.8c	\$7.00



* Test based on a Sovereign® Spa set at 39°C used 6 times per week, 15 minutes with the jets on, 15 minutes with the jets off during each use. Testing conducted by an independent third party certified laboratory in a Controlled Environmental Chamber at multiple ambient temperatures using continuous Data Acquisition Monitoring of watts, temperature and humidity, with all equipment rigorously calibrated to ensure data accuracy. Individual energy consumption will vary depending on water set temperature, actual customer usage patterns and actual environmental ambient conditions.

* Based on the rates as quoted by various local electric providers July 2020. kWh rounded to one decimal place. Rates are subject to change - check with your local electricity provider for the current rate in your area.

CHOOSE YOUR SPA

With three distinct Collections and a wide range of models, sizes, and colours, there is a Hot Spring[®] spa that fits your space, your style, and you.





HIGHLIFE® COLLECTION

Our best. To unleash your best.



LIMELIGHT® COLLECTION

Advanced design and features. A cut above.



HOT SPOT® COLLECTION

Quality, performance, and value. Maximise your every day.

HIGHLIFE[®] COLLECTION

OUR BEST. TO UNLEASH YOUR BEST.

For those who expect the most out of life, the Highlife Collection is everything a spa pool can be. Exceptionally designed and engineered. Generously appointed. It's our very best.





FRESHWATER® SALT SYSTEM READY

A revolution in worry-free water care that helps you spend more time enjoying your spa and less time maintaining it.



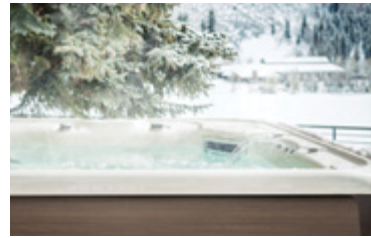
WIRELESS REMOTE CONTROL

Operate spa functions from anywhere in the spa and up to 9 metres away with this unique, easy-to-read colour touchscreen.



MOTO-MASSAGE® DX JET

Patented moving jets provide two powerful water streams that sweep up and down your back for a massage like no other.



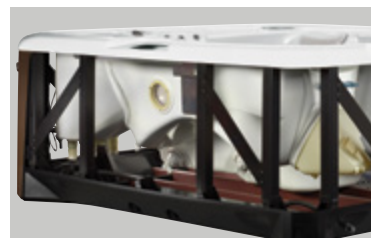
SUPER ENERGY EFFICIENT AND ENERGY SMART®

High-density, full-foam insulation is the same found in commercial freezers. With the comprehensive Energy Smart system of innovations, these are our most energy-efficient spa pools.



100% NO-BYPASS FILTRATION AND TRI-X®

All the water is filtered all the time and dishwasher-safe Tri-X filters help keep water crystal clear.



POLYMER STRUCTURE AND BASE PAN

Built for durability and long life with a structure that will never rust or rot.

HIGHLIFE® COLLECTION

VISUALLY STUNNING

The Highlife Collection redefines how a spa pool looks with its unique floating effect. Elegantly sculpted shells integrate with a waterfall-like detail on each corner that cascades from top to bottom. It all works together harmoniously to create a design that's more like furniture than a spa pool.

Our designers carefully selected a distinctive colour palette with six cabinet finishes and a variety of shell colours so you can create a look that's just right for you.



WALNUT



DRIFTWOOD



SHELL COLOURS



Alpine White Ice Grey Ivory Tuscan Sun Desert

SHELL COLOURS



Alpine White Ice Grey Platinum Tuscan Sun

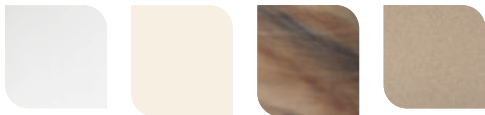
BRONZE



BRUSHED NICKEL



SHELL COLOURS



Alpine White Ivory Tuscan Sun Desert

SHELL COLOURS

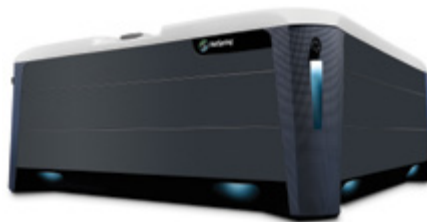


Alpine White Ice Grey

SANDSTONE



SHALE



SHELL COLOURS



Alpine White Ivory Tuscan Sun Desert

SHELL COLOURS



Alpine White Ice Grey Platinum

Actual colours and products may vary from print representation. See dealer to verify.

HIGHLIFE® COLLECTION

LIGHT YOUR NIGHT

Create subtle accent lighting or a medley of colour with the multi-zone Luminescence® LED lighting system. Easily customise it to suit your mood and highlight the exclusive BellaFontana® water feature, included on most Highlife Collection models.

DISTINCTIVE MESSAGE

Up to seven different jet types work together to provide the right amount of pressure and massage for different muscle groups. The Comfort Control® and SmartJet® systems let you personalise your experience.





READY, SET, SOAK

Be confident that your spa is hot and ready before you even step outside with the Ready Indicator Light in the Hot Spring® logo. This valuable feature also serves as a helpful diagnostic tool, letting you know when your spa needs attention.



EASY MAINTENANCE

A convenient floor drain means no bailing water when performing scheduled water changes.



HIGHLIFE[®] COLLECTION



GRANDEE™

7 Adults

Open Seating

254 cm x 231 cm x 97 cm



ENVOY™

5 Adults

Lounge Seating

236 cm x 231 cm x 97 cm



VANGUARD™

6 Adults

Open Seating

221 cm x 221 cm x 91 cm



ARIA™

5 Adults

Lounge Seating

221 cm x 221 cm x 91 cm



SOVEREIGN™

6 Adults

Lounge Seating

203 cm x 236 cm x 84 cm



TRIUMPH™

4 Adults

Double Lounge Seating

236 cm x 188 cm x 84 cm



PRODIGY™

5 Adults

Open Seating

198 cm x 213 cm x 84 cm



JETSETTER™ LX

3 Adults

Lounge Seating

213 cm x 165 cm x 84 cm



JETSETTER™

3 Adults

Lounge Seating

213 cm x 165 cm x 74 cm

	GRANDEE	ENVOY	VANGUARD	ARIA	SOVEREIGN	TRIUMPH	PRODIGY	JETSETTER LX	JETSETTER
Jets	43	43	38	35	28	27	22	22	14
Water Capacity	1,700 L	1,475 L	1,275 L	1,225 L	1,200 L	1,275 L	1,100 L	800 L	750 L
Filled Weight*	2,685 kg	2,250 kg	2,070 kg	1,940 kg	1,945 kg	1,840 kg	1,740 kg	1,250 kg	1,200 kg
Voltage	240V / 20amp	240V / 20amp	240V / 20amp	240V / 20amp	240V / 10amp	240V / 10amp	240V / 10amp	240V / 10amp	240V / 10amp
Entertainment	Optional	Optional	Optional	Optional	Optional	Optional	Optional	Optional	Optional
Lighting	Interior & Exterior	Interior & Exterior	Interior & Exterior	Interior & Exterior	Interior & Exterior	Interior & Exterior	Interior & Exterior	Interior & Exterior	Interior & Exterior
Circulation Pump	SilentFlo 5000™	SilentFlo 5000	SilentFlo 5000	SilentFlo 5000	SilentFlo 5000	SilentFlo 5000	SilentFlo 5000	SilentFlo 5000	SilentFlo 5000
Filtration	100% No-Bypass	100% No-Bypass	100% No-Bypass	100% No-Bypass	100% No-Bypass	100% No-Bypass	100% No-Bypass	100% No-Bypass	100% No-Bypass
Insulation	Completely Filled Multiple Density**	Completely Filled Multiple Density**	Completely Filled Multiple Density**	Completely Filled Multiple Density**	Completely Filled Multiple Density**	Completely Filled Multiple Density**	Completely Filled Multiple Density**	Completely Filled Multiple Density**	Completely Filled Multiple Density**
Water Care System	FreshWater® Salt System Ready/ Ozone (Option)	FreshWater Salt System Ready/ Ozone (Option)	FreshWater Salt System Ready/ Ozone (Option)	FreshWater Salt System Ready/ Ozone (Option)	FreshWater Salt System Ready/ Ozone (Option)	FreshWater Salt System Ready/ Ozone (Option)	FreshWater Salt System Ready/ Ozone (Option)	FreshWater Salt System Ready/ Ozone (Option)	FreshWater Salt System Ready/ Ozone (Option)

* Includes water and adults weighing 80 kg each.

** Refer to "Super Energy Efficient and Energy Smart®" on page 16.

LIMELIGHT® COLLECTION

ADVANCED DESIGN AND FEATURES. A CUT ABOVE.

Featuring fresh clean lines, colourful mood lighting and sleek corner accents, Limelight Collection spas stand out from the crowd.

Best-in-class features and a legendary Hot Spring® experience make these spas a cut above the rest.





FRESHWATER® SALT SYSTEM READY

A revolution in worry-free water care that helps you spend more time enjoying your spa and less time maintaining it.



DUAL-ACTION FILTRATION

Unique two-filter design provides for more effective, constant filtration. Two filters provide more total effective area to keep water cleaner with less maintenance.



FIBERCOR® INSULATION AND ENERGY SMART®

Exclusive insulation fills the cabinet completely to a density four times greater than the half-pound foam used in most spas. Combined with Energy Smart features, this keeps water hot and energy costs low.



COLOUR LCD CONTROL

Adjust lights, temperature, jets, and more with the easy to use system. It's conveniently positioned to be accessible from inside or outside the spa.

LIMELIGHT® COLLECTION

SEE THINGS IN A WHOLE NEW LIGHT

The interior lighting system features multiple points of LED light placed to accent the contours of the spa shell. Two exterior LED lights integrate with the front corners of the spa, creating a uniquely elegant look that is unlike any other. Match the colour to your mood by selecting the hue and brightness of your choice or cycle through all six vibrant colours. Lighting can be set to automatically turn on for four hours each evening.



ROOMY SEATING

Sculpted seats position your body to relieve stress and keep you in place while providing more interior space.

CABINET COLOURS



Coastal
Grey

Espresso

Sable

SHELL COLOURS



Alpine
White

Ice
Grey

Platinum

Tuscan
Sun

Desert



READY WHEN YOU ARE

You'll always know when your spa is ready—even from a distance. A colour-coded Ready Indicator Light shows at a glance when your water is at the set temperature. The light will indicate if your spa needs maintenance, a filter change, or service.



PERSONALISED MASSAGE

Thoughtfully placed jets target specific muscle groups, from your neck to your shoulders, back, calves, wrists and feet. In a Limelight® Collection spa you have a variety of choices for a complete, full-body massage. Our Comfort Control® system lets you adjust intensity, while our SmartJet® system directs water flow to specific jet groups for the ultimate, personalised massage experience.

LIMELIGHT® COLLECTION



PRISM™

7 Adults

Lounge Seating

231 cm x 279 cm x 97 cm



PULSE™

7 Adults

Open Seating

226 cm x 226 cm x 97 cm



FLAIR™

6 Adults

Lounge Seating

213 cm x 213 cm x 91 cm

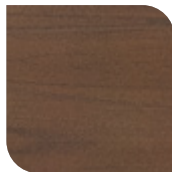
CABINET COLOURS



Coastal Grey



Espresso



Sable

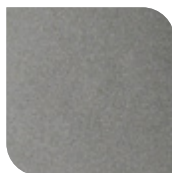
SHELL COLOURS



Alpine White



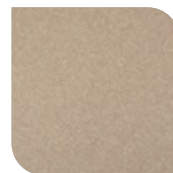
Ice Grey



Platinum



Tuscan Sun



Desert

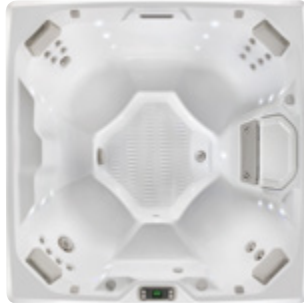


FLASH™

7 Adults

Open Seating

213 cm x 213 cm x 91 cm



BEAM™

4 Adults

Open Seating

203 cm x 203 cm x 84 cm

	PRISM	PULSE	FLAIR	FLASH	BEAM
Jets	73	49	43	41	19
Water Capacity	1,990 L	1,685 L	1,270 L	1,365 L	1,175 L
Filled Weight*	3,085 kg	2,700 kg	2,140 kg	2,300 kg	1,750 kg
Voltage	240V / 32amp	240V / 20amp	240V / 15amp	240V / 15amp	240V / 10amp
Entertainment	Optional	Optional	Optional	Optional	Optional
Lighting	Interior & Exterior	Interior & Exterior	Interior & Exterior	Interior & Exterior	Interior & Exterior
Circulation Pump	SilentFlo 5000™	SilentFlo 5000	SilentFlo 5000	SilentFlo 5000	SilentFlo 5000
Filtration	Dual Action	Dual Action	Dual Action	Dual Action	Dual Action
Insulation	FiberCor***	FiberCor**	FiberCor**	FiberCor**	FiberCor**
Water Care System	FreshWater® Salt System Ready/ Ozone (Option)	FreshWater® Salt System Ready/ Ozone (Option)	FreshWater® Salt System Ready/ Ozone (Option)	FreshWater® Salt System Ready/ Ozone (Option)	FreshWater® Salt System Ready/ Ozone (Option)

* Includes water and adults weighing 80 kg each.

** Refer to “FiberCor® Insulation and Energy Smart®” on page 24.

HOT SPOT® COLLECTION

QUALITY, PERFORMANCE, AND VALUE.
MAXIMISE YOUR EVERY DAY.

*Eye-catching design, unique massage
and trusted quality from the industry leader.
Hot Spot Collection spas deliver
confidence that your investment
will help you maximise every day,
for years to come.*





FROG® IN-LINE SANITISING SYSTEM

Prefilled cartridges automatically release a bromine-based sanitiser and minerals to keep water soft, clean and clear, with less effort.



FIBERCOR® INSULATION AND ENERGY SMART®

Exclusive insulation fills the cabinet completely to a density four times greater than the half-pound foam used in most spas. Combined with Energy Smart features, this keeps water hot and energy costs low.



LCD CONTROL

Large buttons and an easy-to-read LCD display screen make controlling the temperature and features of your Hot Spot® spa a breeze.

HOT SPOT[®] COLLECTION

EYE-CATCHING DESIGN

Each spa creates a dynamic backyard focal point with eye-catching finishes and distinctive design details. Subtly embossed cabinets give the look of natural materials yet provide the durability of advanced composites. Choose between three cabinet colours that can be combined with a variety of shell finishes to create a look that complements your home.

The large bar top offers plenty of space for cups, phones or other items, while contoured seating and integrated pillows complement the overall aesthetic for an exciting look.

ACCENT LIGHTING

Multi-coloured LED lights inside and out* accentuate the design of your spa. You set the mood with a three-step dimmer to adjust light intensity and the option to choose one colour or a revolving display.

**Exterior lighting not available on SX and TX models.*

FLOOR DRAIN

Convenient floor drains mean no bailing water when performing scheduled water changes.





CABINET COLOURS



Almond

Havana

Storm

SHELL COLOURS



Alpine
White

Pearl

Tuscan
Sun

Pebble

COMPLETE MASSAGE EXPERIENCE

Value without compromise describes the Hot Spot® Collection. A variety of jet types, powered by our reliable Wavemaster® pump, work together with personalised control to deliver the massage experience that you expect from Hot Spring® spas.

EXCLUSIVE MOTO-MASSAGE® JET

The SX and TX models come with the Hot Spring Moto-Massage moving jet.

This exclusive, revolutionary jet produces a warm stream of water that sweeps up and down the length of your back for an unparalleled hydromassage experience.



HOT SPOT[®] COLLECTION



RHYTHM™

7 Adults

Open Seating

213 cm x 213 cm x 92 cm



RELAY™

6 Adults

Lounge Seating

213 cm x 213 cm x 92 cm



PROPEL™

5 Adults

Double Lounge Seating

208 cm x 208 cm x 84 cm

CABINET COLOURS



Almond



Havana



Storm

SHELL COLOURS



Alpine White



Pearl



Tuscan Sun



Pebble



STRIDE™

3 Adults

Lounge Seating

213 cm x 165 cm x 74 cm



SX

3 Adults

Open Seating

183 cm x 196 cm x 84 cm



TX

2 Adults

Open Seating

183 cm x 183 cm x 74 cm

	RHYTHM	RELAY	PROPEL	STRIDE	SX	TX
Jets	40	40	24	20	18 with Moto-Massage®	11 with Moto-Massage
Water Capacity	1,250 L	1,290 L	1,135 L	850 L	870 L	720 L
Filled Weight*	2,185 kg	2,140 kg	1,880 kg	1,350 kg	1,400 kg	1,165 kg
Voltage	240V / 15amp	240V / 15amp	240V / 10amp	240V / 10amp	240V / 10amp	240V / 10amp
Entertainment	Optional	Optional	Optional	N/A	N/A	N/A
Lighting	Interior & Exterior	Interior & Exterior	Interior & Exterior	Interior & Exterior	Interior	Interior
Circulation Pump	N/A	N/A	N/A	N/A	Optional SilentFlo 5000**	Optional SilentFlo 5000**
Filtration	Standard	Standard	Standard	Standard	Standard	Standard
Insulation	FiberCor***	FiberCor***	FiberCor***	FiberCor***	FiberCor***	FiberCor***
Water Care System	FROG® In-Line Cartridge Ready/Ozone (Optional)	FROG In-Line Cartridge Ready/Ozone (Optional)	FROG In-Line Cartridge Ready/Ozone (Optional)	FROG In-Line Cartridge Ready/Ozone (Optional)	FROG In-Line Cartridge Ready/Ozone (Optional)	FROG In-Line Cartridge Ready/Ozone (Optional)

* Includes water and adults weighing 80 kg each

** Check with local dealer for availability.

*** Refer to "FiberCor® Insulation and Energy Smart®" on page 30.



A WARRANTY YOU CAN COUNT ON

We are passionate about making the world's best spa pools and we stand behind them with robust and comprehensive warranties designed to give you peace of mind. Our warranties are our commitment to you, and we are proud to share them up front and in detail.

NZ: hotspring.co.nz/spa-pool-owners/spa-pool-warranty
 AU: hotspring.com.au/spa-pool-owners/spa-pool-warranty/

	HIGHLIFE® COLLECTION	LIMELIGHT® COLLECTION	HOT SPOT® COLLECTION
No-Leak Shell	7 Years	7 Years	5 Years
Shell Surface	7 Years	5 Years	2 Years
Cabinet	5 Years	5 Years	2 Years
No-Leak Plumbing	5 Years	5 Years	2 Years
No-Fault® Heater	5 Years	5 Years	2 Years
Component Warranty	5 Years	5 Years	2 Years
Interior Light Assembly	2 Years	3 Years	2 Years
Wireless Remote Control Battery	1 Year	N/A	N/A

COMPARE SPA COLLECTIONS

BENEFIT	FEATURES	HIGHLIFE® COLLECTION	LIMELIGHT® COLLECTION	HOT SPOT® COLLECTION
MASSAGE	Moto-Massage® DX	●		
	Moto-Massage			SX & TX
	Comfort Control®	●	●	●
	SmartJet® System	●	●	
CLEAN WATER	100% No-Bypass Filtration	●		
	Tri-X® Filters	●		
	Dual-Action Filtration		●	
	FreshWater® Salt System Ready	●	●	
	FROG® In-Line Cartridge Ready*			●
ENERGY EFFICIENCY	Completely Filled Multiple Density Foam Insulation	●		
	FiberCor® Insulation		●	●
	Polymeric Base Pan and Substructure	●		
	Polyethylene Sealed Bottom		●	●
	SilentFlo 5000® Circulation Pump	●	●	Optional on SX & TX
	Patented Pump Shroud	●		
	Titanium No-Fault® Heater	●	●	
	No-Fault Heater			●
	Custom-Fit Insulated Cover	●	●	●
	Meets CEC and APSP Energy Efficiency Standards	●	●	●
INTUITIVE CONTROL	Wireless Touchscreen Control	●		
	Colour LCD Control		●	
	LCD Control			●
	Diagnostic Logo Light	●	●	
LIGHTING & ENTERTAINMENT	Customisable LED Zone Lighting	●		
	Multi-Colour LED Lighting	●	●	●
	Exterior Lighting	●	●	All except SX & TX
	Wireless Entertainment	Optional	Optional	Optional except Stride®, SX, TX

NECESSARIES®

You will enjoy your spa more often with the added convenience provided by these Hot Spring® Necessaries. Specifically designed for your Hot Spring spa, these additions help you get the most out of your experience.





COVER LIFTERS

Our patented cover lifters make opening and closing the spa cover simple, helping maintain your spa pool and extending the life of your cover.

COVERCRADLE®

For the ultimate in ease, this robust system offers an ultra-smooth gliding mechanism and the power of dual pneumatic springs to support covers on even our largest spas.

COVERCRADLE® II

The CoverCradle II uses a single pneumatic spring optimised for lighter covers and smaller spas.

UPRITE®

Ideal for tight spaces and recessed spa installations, the Uprite system also provides an element of privacy by holding your folded cover in a vertical position.

LIFT'N GLIDE®

The Lift'n Glide is easy to operate. Simply lift the cover, glide it back, and enjoy.

See your dealer for specific lifter clearance requirements.

STEPS



HIGHLIFE® COLLECTION

Textured treads and contemporary design match the colour of the spa corners.



LIMELIGHT® COLLECTION

Made from the same material as the cabinets and available in colours to match each spa.



HOT SPOT® COLLECTION

Two-tone steps with treads in three different colour options to match spa cabinets.



POLYMER

Durable and lightweight, this step is offered in multiple colours and is eco-friendly – made with 100% recyclable material.



SPA SIDE ACCESSORIES

UMBRELLA

Shade your spa with the 360° rotatable spa side umbrella, featuring a 3 metre diameter canopy.

HANDRAIL

Our sturdy handrail is easy to reach when entering or exiting your spa. A battery-powered LED light adds illumination.

TOWEL TREE

Keep your towel off the ground and within reach.

COOLING SYSTEM

COOLZONE™

With the CoolZone System, you can use your spa pool for a warm soak on a chilly evening and a cool, revitalising dip on a hot day. For serious athletes, the spa can be used for cold-water therapy, any time. Depending on ambient temperature, the system can also improve energy efficiency during normal operation by reducing the amount of time the No-Fault® heater operates. This can translate to additional energy cost savings.

Available on select Highlife and Limelight Collection models.



ENTERTAINMENT

HIGH-QUALITY SOUND

On many models, an optional Bluetooth® music system can be added for streaming audio live or from your playlist. You can also add a subwoofer to select models for increased volume and richer bass tones.

PICTURE PERFECT

Add an all-weather, 22" HD wireless monitor to watch the game or your favourite shows. It offers excellent picture quality with 1080p screen resolution, tempered glass, and anti-reflective/anti-glare coating.



EXPERIENCE THE HOT SPRING® DIFFERENCE

We are passionate about making the world's best spa pools and delivering an unparalleled ownership experience. Our spa pools are consistently recognised for outstanding quality and value.

Hot Spring® spas are made by Watkins Wellness®, an experienced team with 40 years of spa pool manufacturing experience.

This dedication and experience means unsurpassed quality, confidence and reliability for you and your family and many years of enjoyment in your Hot Spring® spa.

KEEP YOUR HOME AND FAMILY SAFE

All Hot Spring Spas have certified plumbing suction outlets for safety. This prevents children's fingers, long hair, or clothing from becoming trapped in the intake outlets. This is done by releasing suction when a blockage is detected. All Hot Spring Spas are independently laboratory tested to AS/NZ Standard 60335 certification and approved by the most stringent electrical authority in Australasia.

PEACE OF MIND GUARANTEED

Our spas meet the highest quality control standards. They are ISO9001 rated. Hot Spring is the only spa company in the world for which both the factories and distribution warehouse meet these requirements. We also keep spare parts for 20 years, for every spa we make and alternate parts for every spa we've ever made. This means you can rest assured that you are sorted if your spa needs replacement components.





PERSONAL ONSITE INSPECTION

Once we have helped you with the selection of your Hot Spring spa, we can assist you with preparation of the spa site at your home. We offer an onsite inspection to advise about access and site preparation. As well, our team of Hot Spring spa professionals can assist you to coordinate with qualified and spa experienced electricians, builders, landscape designers and Hiab crane drivers.

FREE SPA DELIVERY AND INSTALLATION*

Experience the white glove delivery service by our highly experienced Hot Spring delivery teams. No drop off at curbside, depots or third-party delivery companies. We use specialised spa trailers and delivery equipment to ensure your spa arrives safely to your home and is carefully positioned in its final resting place.**

We manage and coordinate your spa installation from start to finish so you can enjoy the best seats in your home with ease.

*Deliveries outside of normal dealer service areas can be quoted on request.

**All onsite costs are to be paid by the customer. Extra lifting devices or labour may be required and are not included in free delivery.

SPA INDUCTION AND HANDOVER

Once your spa is filled, our experienced Hot Spring spa expert provides a full handover process to ensure that you can balance and maintain your spa water and make use of all the unique features your Hot Spring Spa has to offer.

PLUG IN AND PLAY

All Hot Spring Spas are engineered to operate with low power draw - even in snow conditions!

SAVE UP TO \$2,000!

Most Hot Spring Spas are pre-wired which means you can take your spa, plug it in and play - saving you up to \$2,000 on electrical installation costs.



THE ABSOLUTE BEST SPA POOL OWNERSHIP EXPERIENCE™

Dedication and commitment to our customers has helped make Hot Spring® Spas the world's best-selling brand. This means you can count on an exceptional ownership experience for years to come.

*40+ years of
excellence*

*2 million
spas sold*

THE BEST RETAIL PARTNERS

Over 1,000 authorised Hot Spring dealers provide unparalleled customer care as you shop for, purchase, and enjoy your new spa pool. With sales and service centres located worldwide, we have the most extensive support network in the industry.

Hot Spring Spas New Zealand has been serving New Zealand for 40 years and Australia for 28 years.

A BRAND YOU CAN TRUST

For more than 40 years, we've built our reputation on quality and have earned TradeCertified™ certification for providing a superior ownership experience in every year since the award's inception in 2005.



WatkinsWellness®
Feel good. Live well.

Hot Spring Spas is a brand of Watkins Wellness, the leader in spa pool and aquatic fitness products. Watkins Wellness is part of MASCO Corporation, a Fortune 500 company whose family of quality home products includes:



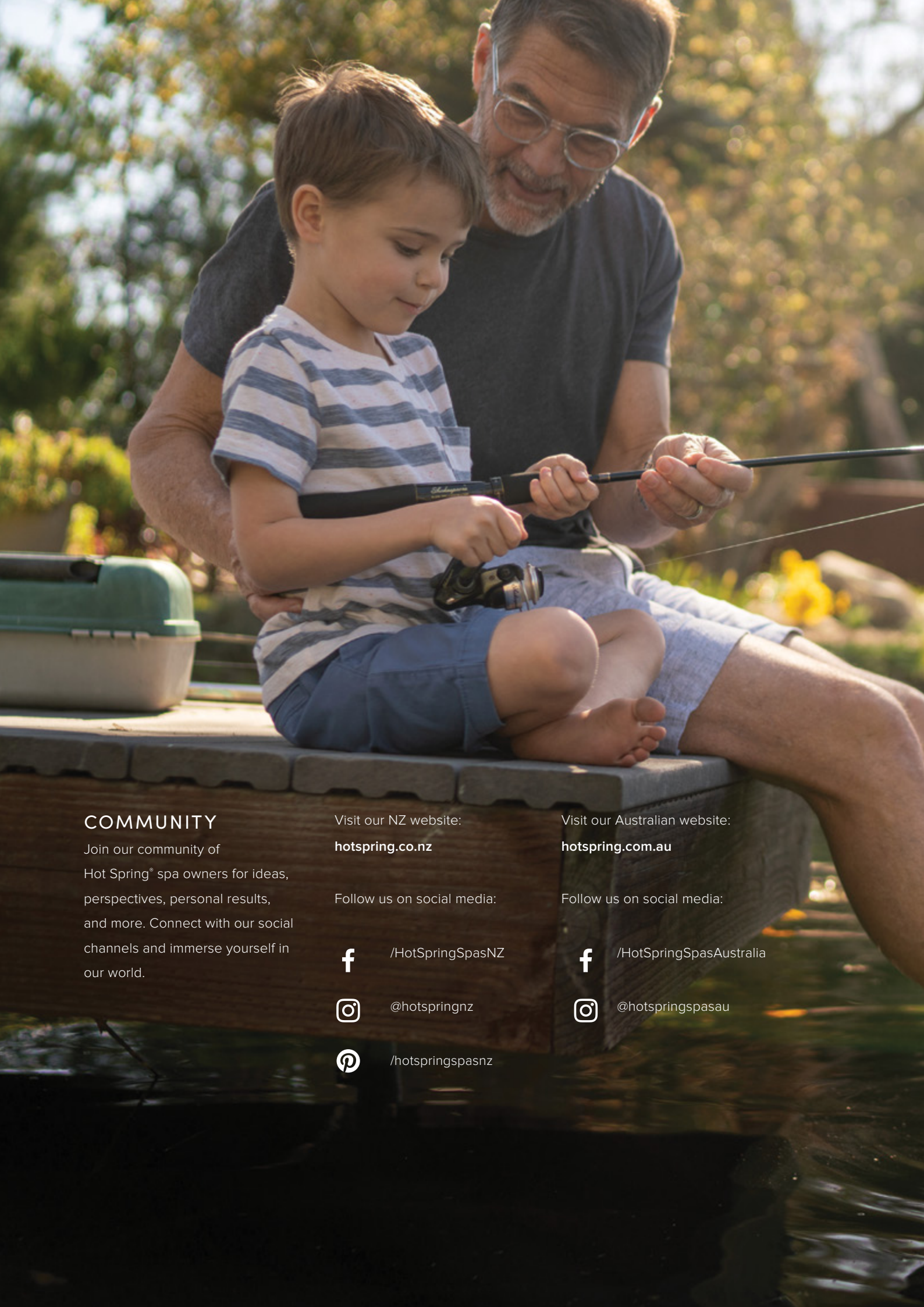
You don't have to take our word for it.

See what real Hot Spring owners are saying – people just like you.

NZ: hotspring.co.nz/customer-reviews

AU: hotspring.com.au/customer-reviews





COMMUNITY

Join our community of Hot Spring® spa owners for ideas, perspectives, personal results, and more. Connect with our social channels and immerse yourself in our world.

Visit our NZ website:

hotspring.co.nz

Follow us on social media:



[/HotSpringSpasNZ](https://www.facebook.com/HotSpringSpasNZ)



[@hotspringnz](https://www.instagram.com/hotspringnz)



[/hotspringspasnz](https://www.pinterest.com/hotspringspasnz)

Visit our Australian website:

hotspring.com.au

Follow us on social media:



[/HotSpringSpasAustralia](https://www.facebook.com/HotSpringSpasAustralia)



[@hotspringspasau](https://www.instagram.com/hotspringspasau)

OUR STORY

All great business stories start from a garage and Dale Paretovich, founder of Hot Spring Spas New Zealand and Australia, is no exception.

The year was 1980 and Dale was in pursuit of the latest technology in spa innovation. When Dale couldn't find what he needed, he decided to create his own spa pools, from his Hillcrest home garage. An engineer by trade, Dale manufactured the first portable and fully insulated spa in Australia and New Zealand.

Since Hot Spring Spas humble beginnings, the company has undertaken a joint venture with Watkins Wellness™ the world's largest manufacturer of spa pools, to continue to deliver quality premium products to Australasia and Asia. Spa pools and componentry are imported directly from our factories in California, Mexico and Pennsylvania.

The New Zealand head office and distribution centre is in a purpose-built spa warehouse in Auckland where we have over 35 team members. We export to dealers throughout Australia, the Pacific Islands and Asia. Our dealers offer a local and personalised service by trained, experienced professionals. Today, Hot Spring Spas New Zealand and Australia is the largest importer of Hot Spring Spas and Endless Pools® Fitness Systems in the world.

One thing has never changed over the four decades of serving Kiwis and Aussies. We still strive to offer The Absolute Best Spa Pool Ownership Experience™ by delivering quality spa pools along with exceptional customer service. Many customers return 15 to 20 years later to trade in their old working Hot Spring Spa for the latest model. Hot Spring Spas stand the test of time.



©2021 Watkins Wellness, 1280 Park Center Drive, Vista, California 92081. All rights reserved. Specifications, colours, and surface materials subject to change without notice. Not all features are available on all products. Printed in NZ. ACE, Aria, Beam, BellaFontana, Clean Screen, Comfort Control, Connexion, CoolZone, CoverCradle, Earth Smart, Energy Smart, Envoy, EverFresh, Everwood, Every Day Made Better, FiberCor, Flair, Flash, FootWell, FreshWater, FreshWater Ag+, Grandee, Highlife, Hot Spot, Hot Spring, HydroStream, IQ 2020, Jet-Cluster, Jetsetter, JetStream, Lift 'n Glide, Limelight, Luminescence, Moto-Massage, Necessories, No-Fault, Nobody Backs You Better, Precision, Prism, Prodigy, Pulse, Quartet, Raio, Relay, Rhythm, SilentFlo 5000, SmartJet, SoothingStream, Sovereign, Splendors, Stride, The Absolute Best Spa Pool Ownership Experience, The simpler, cleaner, fresher way to hot tub, Tri-X, Unleash your best self, UpRite, Watkins Wellness, Vanguard, Vanishing Act, Vidro, VirtualValet, and Wavemaster are trademarks of Watkins Manufacturing Corporation. Delta is a registered trademark of Delta Faucet Company. Behr is a registered trademark of Behr Process Corporation. Hansgrohe is a registered trademark of Hansgrohe SE. Bluetooth is a registered trademark of the Bluetooth Special Interest Group (SIG). FROG and @ ease are registered trademarks of King Technologies. All other marks are property of their respective owners. All 230 V models must be installed by a licensed electrician in accordance with local codes. United States Patents #5,647,736, #5,724,478; #5,810,257; #5,810,262; #5,819,332; #5,924,850; #6,080,973, #6,195,811; #6,324,707, #6,381,766B1; #6,435,691; #6,596,951; #6,621,985; #6,859,952; #6,873,793; #6,976,636; #7,162,752; #7,254,847, #7,219,690; #7,472,430; #7,472,431; #7,698,754, #8,273,254; #8,266,736; #8,465,650; #8,688,280; #8,838,280; D431297, D496107, D518896; D531729; D611612; D620599; D620600; D621947; D624657; D634019; D634020; D634021, D643538, D755401 and other patents pending.

